



Ladies In Red

PREMIER RED ANGUS EVENT

NOVEMBER 24, 2018 - LAKE BENTON, MN

Michelle
Vehner ©



HUTCHINSON
KANSAS



Grand Champion Owned Female - 2018 NAJRAE
Congratulations Newman Cattle Co.
Sold in the 2017 Event!

Sale Schedule

Friday, November 23, 2018

Cattle available for viewing and dinner served at 6 pm

Saturday, November 24, 2018

Lunch served at 11:00 am

Sale begins at 2:00 pm at the Weber Land & Cattle
Headquarters in Lake Benton, MN

Sale Location

Weber Land & Cattle Headquarters

1978 County Highway 13 - Lake Benton MN

25 miles east of Brookings, SD on Hwy 14,

Then 4 miles north on Hwy 75, Take County

Hwy 13 east for 3/4 mile. Look for red sheds on
the north side of the road.

Online Bidding

Watch and bid online at www.DVAuction.com.

DVAuction
Broadcasting Real-Time Auctions

Welcome to the Sale

Welcome to the 8th Ladies in Red Event. Our families continue to value the new friendships, partnerships, and contacts built through previous sales. We look forward to continued opportunities and hearing the success stories from selections made from previous Ladies In Red Events.

The cattle business is a good place to be and cows continue to be good property to own. Without a doubt, the Red Angus breed continues a steady climb in popularity and interest. From the commercial sector to the show ring, Red Angus genetics are in high demand. It is prime time to invest in quality Red Angus genetics.

As you page through the catalog, we hope you agree the offering is as strong as ever. Whether you are looking for a donor prospect, a heifer to compete in the show ring or a female to add to your program; we believe the quality of genetics, matings and cattle presented will exceed your expectations. From the opens to the bred females, these are the kind with the potential to have a positive and lasting impact on a Red Angus program.

As always, our families look forward to seeing you at the Ladies in Red Event. If we can be of assistance in any way, do not hesitate to contact us. Please feel free to come early and join us for cattle viewing and hospitality on Friday. We hope to see you in Lake Benton on November 24th.

Enjoy the cattle,

The Ladies in Red Sale Group

TC REDS

Scott, Mia, Ty, Calli & Tucker Bayer

Scott: 715-573-4943 | Ty: 715-573-0153

Kale Spengler: 563-299-7679

tcreds.com

WEBER LAND & CATTLE

Jesse, Michelle, Wacey, Reese,

Andi & Mick Weber

Jesse: 507-530-5427

weberlandandcattle.com

ZEHNDER CATTLE

Chad, Cameo, Sydney &

Natalia Zehnder

Chad: 612-554-2154

Alex Anderson: 320-290-5615



HUTCHINSON
KANSAS



NAJRAE

RESERVE CHAMPION FUTURITY HEIFER

One Thousand and 00/100

BREEDER'S CUP FUTURITY SHOW



Reserve Champion Female - 2018 NAJRAE Futurity Show
Congratulations Alyssa Deporter
Sold in the 2017 Event!

AUCTIONEER:

Seth Weishaar: 605-210-1124

SALE REPRESENTATIVES:

Justin Dickoff: 605-290-0635
Donnie Leddy: 605-695-0113
Dave Geffert: 608-393-6991
Kelly Schmidt: 406-599-2395

Lydell Meier: 865-806-0350
Chris Effling: 605-769-0142
Brent Wirth: 715-760-1727
Michael Brual 507-951-6293

HERD HEALTH:

Cattle will be accompanied by proper health certificates for immediate shipment.

TERMS AND CONDITIONS:

All cattle are to be settled for sale day unless prior arrangements have been made. The cattle sell under the terms and conditions of the Red Angus Association of America. All cattle guaranteed exportable to Canada.

ANNOUNCEMENTS:

A supplemental update sheet will be available sale day with up-to-date information. All announcements made from the auction block take precedence over printed matter in this sale book.

INSURANCE & LIABILITY:

Insurance will be offered at the clerk's desk. All persons who attend this sale do so at their own risk, legal or otherwise, for their safety or the behavior of animals. The owners assume no liability for property loss or accidents that may occur.



The Weber Family



Introducing
Mick Weber
Born Oct. 4, 2018



The Zehnder Family

DELIVERY:

A \$350 per lot maximum guaranteed rate to central locations in U.S.

NAJRAE FUTURITY:

All Ladies in Red females are eligible to show in the Breeder's Cup Futurity Show at the North American Jr. Red Angus Event in 2019.

ACKNOWLEDGMENTS:

Catalog and advertising produced by Tracy McMurphy
Red Angus World - www.redangusworld.com

FOOD AND REFRESHMENTS:

Refreshments and a meal will be served Friday evening at 6 pm and everyone is welcome to view the cattle. A complimentary lunch will be served on sale day.

ACCOMMODATIONS:

Holiday Inn Express - Brookings
3020 Lefevre Dr, Brookings, SD
605-692-9060
Lake Benton Resort
325 Lake Shore Dr - Lake Benton, MN
507-368-4399

NORTH AMERICAN
INTERNATIONAL
LIVESTOCK EXPOSITION

2015

REGIONAL
RED ANGUS SHOW

GRAND
CHAMPION
FEMALE
RED ANGUS
SHOW
2015
NORTH AMERICAN
INTERNATIONAL
LIVESTOCK
EXPOSITION

Linde

Grand Champion - 2015 Champion NAILE Open Show
Congratulations Hannah Martin
Sold in the 2014 Event!

Ladies in Red on the Backdrop!



2018 NAJRAE Champion Bred and Owned
Congratulations Meado West Farms - MN
Sold in the 2016 Event!



Champion Red Angus Female and 4th Overall
2018 Minnesota Beef Expo
Congratulation to Newman Cattle Co. - TX
Sold in the 2017 Event!



Third Overall Female 2017 Cattle Battle
Congratulations to the Farmer Group - NE
Sold in the 2016 Event!



Champion Red Angus 2018 Illinois Beef Expo
Congratulation to Reese Anderson - IA
Sold in the 2017 Event!



Champion Female 2018 MN State Fair 4-H Show
Congratulation to Ryan Hegland - MN
Sold in the 2017 Event!



Champion Red Angus 2018 Nebraska State Fair.
Congratulations Kassi Jones - NE
Sold in the 2017 Event!



WEBR LANA`S KIND 810

BD: 1/21/18

RAAA: 3962043

OFFERED BY WEBER LAND & CATTLE

Sire BUF CRK THE RIGHT KIND U199
PIE THE COWBOY KIND 343
 PIE CASCADE 561

Dam BJJ 6025
BJF LANA'S EQUAL 8021U
 SBCC EQUAL LAND

This Cowboy Kind daughter is as royal bred as we have to offer. She is the natural calf by our 8021U donor. 8021 is the mother to Reform the \$50,000 bull going to Six Mile & VF Red Angus. She also raised Night Train, our go to for power and performance. Recently, a maternal sister to Lot 1 brought \$27,000 on the Flash & Function sale to Scott Werning, SD. In addition, a flush mate sister sold to the Schwartz Family, IN in the 2017 Ladies In Red. As far as Lot 1 herself, she's the right kind. Show her or not, take her home and let her raise'em.

BW	WW	BW	WW	YW	MILK	ME	HPG	CEM	STAY	Marb	REA
68	565	-2.3	57	93	24	5	8	8	17	0.46	0.04

2



WEBR RED WINE 815

BD: 1/25/18

RAAA: 3962183

OFFERED BY WEBER LAND & CATTLE

Sire LSF TAKEOVER 9943W
LSF SRR TAKEOVER 5051C
 LSF RR SYRINGA U8044 X0331

Dam PZCTMAS FIREBOLT 3397A
WEBR RED WINE 668
 WEBR RED WINE 301

815 has been the "right kind" since day one. Her mother is a first calf heifer. Her grandma, 736, is a full sister to Doc Holiday that generates every year and is still in production. Lot 2 comes bringing a ton of quality to the table with added rib shape, cool fronted and super mobile.

BW	WW	BW	WW	YW	MILK	ME	HPG	CEM	STAY	Marb	REA
67	558	-3.7	44	74	26	1	9	9	16	0.46	0.04

3



Maternal Brother to Lot 3



Sweetness - Dam of Lot 3

WEBR SWEETNESS 825

BD: 1/30/18

OFFERED BY WEBER LAND & CATTLE

RAAA: 3962159

Sire ANDRAS IN FOCUS B152
ANDRAS NEW DIRECTION R240
 ANDRAS KURUBA B111

Dam PZCTMAS FIREBOLT 3397A
WEBR SWEETNESS 574
 BJJ LANA'S EQUAL 8021U

This New Direction balances up with the best. If her mother wasn't just reaching her prime we wouldn't be selling her. Lot 3's mother, 574, is a maternal sister to Reform & Night Train. She is next on our radar to start flushing. Big boned, powerful & picture perfect uddered. This heifer will work for anyone in any setting.

BW	WW	BW	WW	YW	MILK	ME	HPG	CEM	STAY	Marb	REA
66	569	-3.1	54	90	24	-1	9	8	15	0.45	0.05

A



WEBR EMILY 831

BD: 2/3/18

RAAA: 3962161

OFFERED BY WEBER LAND & CATTLE

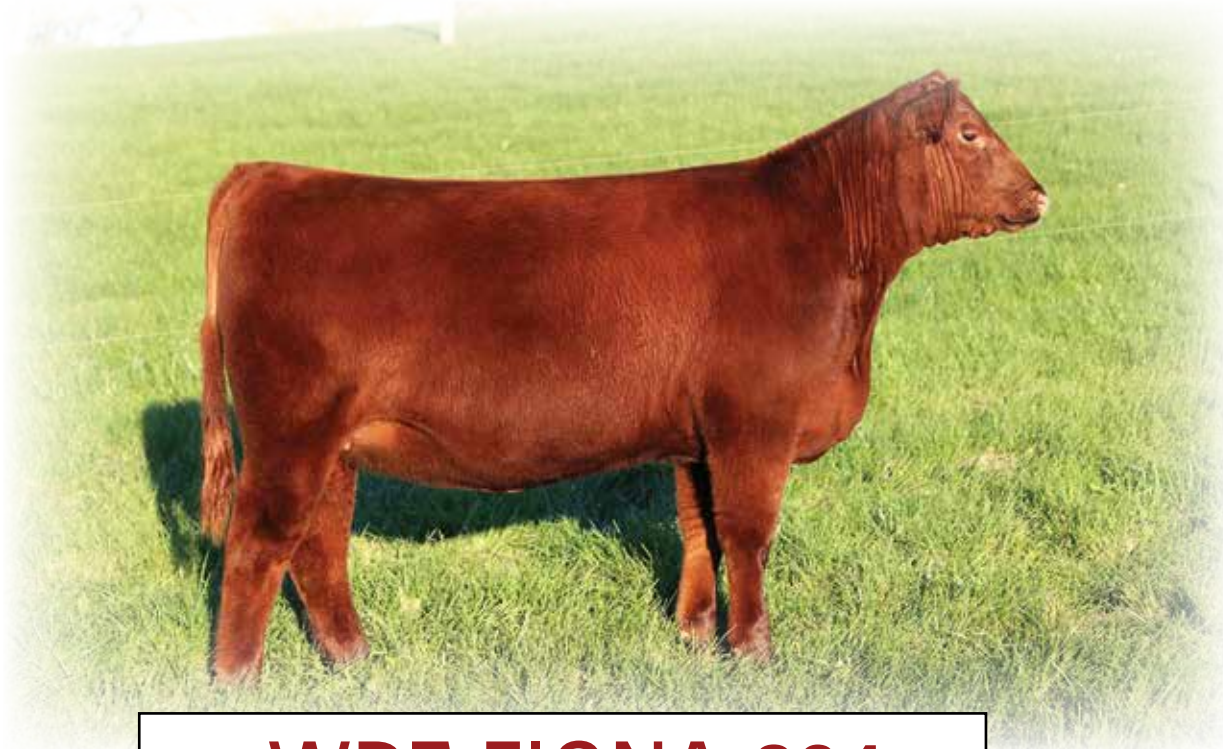
Sire LSF SAGA 1040Y
PIE CINCH 4126
 TKP BONNE BEL 110

Dam CRSL GOLDMASTER X74
WEBR EMILY 535
 JACOBSON EMILY 6024

This Cinch daughter will definitely get your attention. Dark red, whistle fronted, harry, with a great hip & hind leg. Lot 4 would be a 3/4 sister to our high selling heifer last year selling to Rust Mountain View, ND

BW	WW	BW	WW	YW	MILK	ME	HPG	CEM	STAY	Marb	REA
83	599	-0.3	62	100	26	1	9	8	17	0.26	-0.04

5



WDZ FIONA 834

BD: 2/5/18

RAAA: 3971420

OFFERED BY ZEHNDER CATTLE

Sire BHR DURANGO 60
BHR DURANGO 1158
MISS BHR GRAND VAQUERO 8150

Dam BECKTON EPIC R397 K
EIR C210
EIRY219

This dark cherry red female combines two power sires in Durango and Epic. Her EPD proof ranks her in the top 5% for WW and top 2% for YW. Phenotypically, she is right in her design and possesses a show ring presence.

BW	WW	BW	WW	YW	MILK	ME	HPG	CEM	STAY	Marb	REA
80	724	1.4	71	120	30	0	11	6	18	0.45	0.07

6



TC LUANNA 02F

BD: 2/5/18

RAAA: 3964661

OFFERED BY TC REDS

Sire PIE BILLINGS 487
NBAR HAMLEY 5913
NBAR KELLY 913

Dam BHR DURANGO 1158
TC 68D
MEADO-WEST LUANNA

This Hamley daughter has a really bright future. If you like cattle that have that extra stoutness and power and tie that into a nice attractive made package this heifer is the ticket. She stems back to the Luanna cow family that has done great things here for us at TC Reds.

BW	WW	BW	WW	YW	MILK	ME	HPG	CEM	STAY	Marb	REA
70	564	0.5	54	79	21			6	17	0.33	-0.13

7



Maternal Brother to Dam of Lot 7

WEBR WILD ROSE 834

BD: 2/6/18

RAAA: 3962151

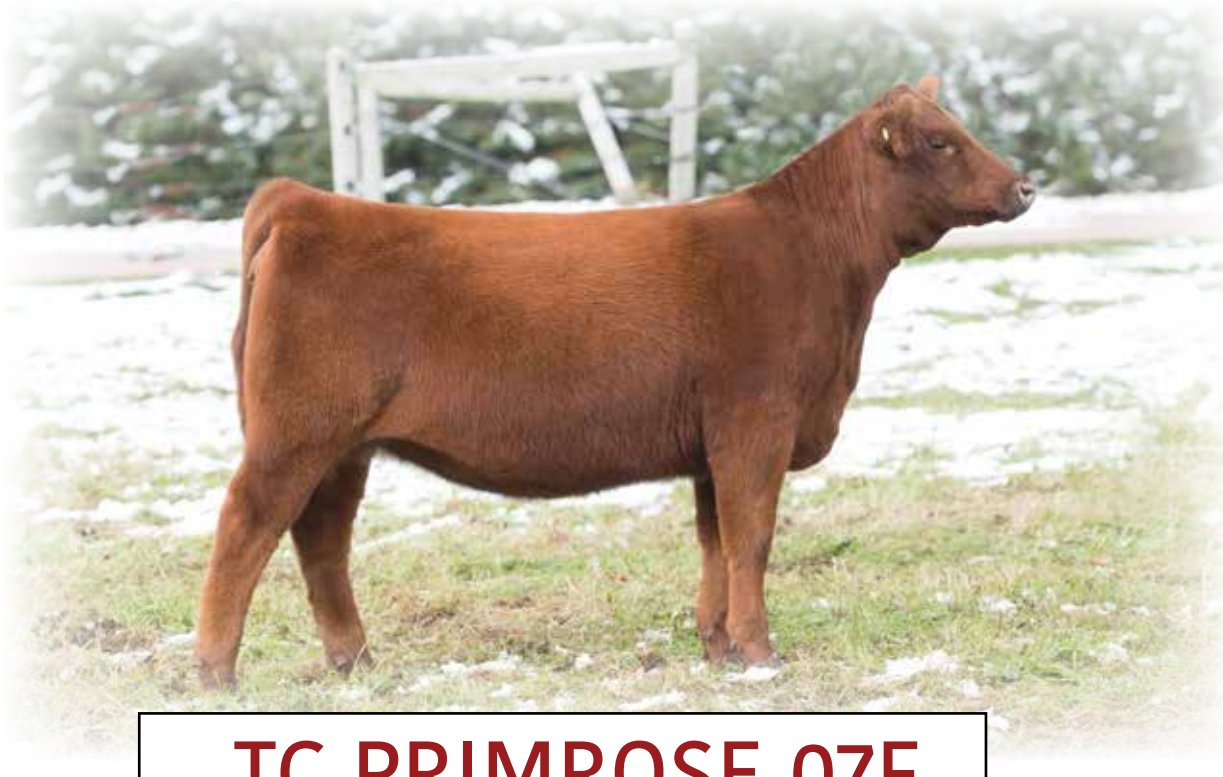
OFFERED BY WEBER LAND & CATTLE

Sire LSF SAGA 1040Y
PIE CINCH 4126
 TKP BONNE BEL 110

Dam NSFR TAHOE X44
WEBR WILD ROSE 566
 WEBR WILD ROSE 1002

Big outlined and heavy structured one here. This Cinch daughter posted a 114 WW ratio and does it in a cool package. Her mother would be a maternal sister to "Worth It" who was successfully campaigned by Harmony Hill, MT. This one bred to Beartooth could be magical. Let's make it happen!

BW	WW	BW	WW	YW	MILK	ME	HPG	CEM	STAY	Marb	REA
88	669	-0.6	71	111	25	0	11	8	17	0.2	-0.11



TC PRIMROSE 07F

BD: 2/10/18

RAAA: 3989272

OFFERED BY TC REDS

Sire NBAR HAMLEY S913
TC HAMLEY 20D
WEBR SUZY Q 863

Dam RED SSS OLY 554T
TC PRIMROSE 33D
NBAR PRIMROSE R541

We are really happy with our first calf crop out of our lead bull in our 2017 Reserve Champion pen of bulls in Denver TC Hamley 20D. This heifer is a prime example. So sound and good looking from the side. Stout and powerful, big bodied and to top it off she has the big hair! Just out of a first calf heifer and also twin to a heifer. She will just keep getting better in time.

BW	WW	BW	WW	YW	MILK	ME	HPG	CEM	STAY	Marb	REA
60	561	-0.9	54	84	20	-4	11	5	14	0.29	-0.06

9



Maternal Brother to Lot 9

WEBR TAMARA 847

BD: 2/12/18

RAAA: 3962163

OFFERED BY WEBER LAND & CATTLE

Sire WEBR DOC HOLLIDAY 2N
WEBR TOMAHAWK 1204
 PFFR MS NYACK 237

Dam BIBBER HARD DRIVE Y120
TACTAMARA C3-A196
 VF-TAMARA A196-545

This Tomahawk daughter is about as complete as you can make them. She is moderate on frame and big time on quality! Dark red and deep centered with loads of style. Her maternal brother by Beartooth was our 2017 high selling bull going to Broken Heart Ranch, SD.

BW	WW	BW	WW	YW	MILK	ME	HPG	CEM	STAY	Marb	REA
68	516	-2.8	51	86	35	4	9	7	17	0.46	0.07

10



Brando - Sire of Lot 10

WEBR CLARA 851

BD: 2/14/18

RAAA: 3962165

OFFERED BY WEBER LAND & CATTLE

Sire HCG BRANDING IRON
RED SIX MILE BRANDO 666C
RED SSS BARMAID 301Z

Dam DUNN DROUGHT BREAKER A510
VFCLARA C309-281
LARSON VICTORIA JOAN 28

This Brando daughter has been one of my favorites since she hit the ground. I'm having sellers remorse already as I write this footnote! We think this one could be big time in every sense. You'll love this one from every angle. Powerful yet pretty, deep and sound enough to last forever. The mating options are endless. We feel she is capable of raising show heifers to herd bulls
Retaining the right to one successful flush.

BW	WW	BW	WW	YW	MILK	ME	HPG	CEM	STAY	Marb	REA
92	625	2.2	66	111	25	0	12	4	17	0.44	0.03



TC VERONICA 12F

BD: 2/15/18

RAAA: 3920307

OFFERED BY TC REDS

Sire WEBR DOC HOLLIDAY 2N
WEBR TC CARD SHARK 1015
PFFR MS NYACK 237

Dam RED RAINBOW TRANSCENDENCE 29B
TC 67D
TC VERONICA 64A

I'll be the first to say it but, here is the sleeper of the sale. This Card Shark daughter has all the pieces to be a great one. I love the look and style this heifer brings to the table yet is athletic on the move she just is green yet. This heifer reminds of the Card Shark heifer we sold to the Van Dyke Family in Illinois that went on to be Reserve supreme at the World Beef Expo and Winning the Jr Show at NWSS in 2016

BW	WW	BW	WW	YW	MILK	ME	HPG	CEM	STAY	Marb	REA
70		-0.7	55	87	27	-1	10	8	16	0.21	-0.06

12



Full Sister to Lot 12

WDZ FAITH 850

BD: 2/17/18

RAAA: 3971424

OFFERED BY ZEHNDER CATTLE

Sire NBAR HAMLEY S913
MEADO-WEST HEARTLESS 416
 MEADO-WEST PRECIOUS 010X

Dam WDZ JACKHAMMER 013
WDZ BETTY 416
 OLC UNITY K404

Faith is a full sister to the heifer Brady Edge purchased out of the LIR 2016. She went on to have a successful show career for him, including being named Champion Red Angus at the Iowa Beef Expo. More importantly, she has already proven successful in production, producing the 2018 Iowa State Fair Jr Show calf champion for Brady. A female that is long and level out of her hip with added sweep through the center portion of her body.

BW	WW	BW	WW	YW	MILK	ME	HPG	CEM	STAY	Marb	REA
73	670	-0.3	53	81	27	2	12	6	15	0.24	-0.07

13



WEBR PRIME MIMI 864

BD: 2/20/18

RAAA: 3962209

OFFERED BY WEBER LAND & CATTLE

Sire WEBR DOC HOLLIDAY 2N
WEBR TC CARD SHARK 1015
PFFR MS NYACK 237

Dam PAR PRIME TIME 001Z
VF PRIME MIMI B604-394X
BIEBER MIMI 394X

After telling all the visitors this summer that this heifer wouldn't be on the sale, they got their wish. It always stings a bit when we sort sale heifers off! This Shark daughter is my kind. Soft, sound, stout yet still flexible down low. We bought her mother from VF as a first calf heifer with a fall calf at side, we held her open and switched her to Spring calving. It was worth the wait. We're confident on this one in person and on paper. You'll have 3 stars on this one sale day!

Retaining the right to one successful flush.

BW	WW	BW	WW	YW	MILK	ME	HPG	CEM	STAY	Marb	REA
86	617	-0.4	65	106	28	6	12	7	17	0.45	0.01

14



WDZ FELICIA 874

BD: 3/2/18

RAAA: 3971444

OFFERED BY ZEHNDER CATTLE

Sire C-BAR ANTICIPATION 101W
C-BAR-RJ RECKONING 105B
DAMAR MIMI W085

Dam WDZ KING ROB 8022 ET
WDZ BELLA 030
TC WDZ BELLA 8013

We like the added length of spine, flexible structure, and look this heifer has. The C Bar RJ Reckoning daughters have certainly found success in the show ring the last couple years and this female will be no exception.

BW	WW	BW	WW	YW	MILK	ME	HPG	CEM	STAY	Marb	REA
91	632	-0.1	46	75	28	3	15	7	15	0.46	-0.12

15



WEBR KITTY 878

BD: 3/4/18

RAAA: 3962033

OFFERED BY WEBER LAND & CATTLE

Sire LSF RAB PERFORMANCE 2772Z
LAZYJ PURSUANCE 4202-2657
NER COPPER QUEEN 2657

Dam RBJR ADVANCE A709
BJF 7006T
BJF 034K

This heifer has all the pieces to be in contention all summer. Dark red, big hipped and stands on a big foot. Her mother is an 11 year old cow that we purchased in the Fehrman dispersal last fall. She comes from the same cow family as Lot 39, the 9059 donor cow that sells in this sale. Proof is all here. Take this one home and put her to work.

BW	WW	BW	WW	YW	MILK	ME	HPG	CEM	STAY	Marb	REA
91	547	1.7	60	97	25	3	10	6	18	0.39	-0.02

16



WEBR ROCKER 881

BD: 3/7/18

RAAA: 3962139

OFFERED BY WEBER LAND & CATTLE

Sire LSF TAKEOVER 9943W
LSF SRR TAKEOVER 5051C
LSF RR SYRINGA U8044 X0331

Dam J BAR 7 GRAND CANYON 2222
BJF ROCKER 5003C
BJF 6565

This one is greener, but we feel she will make a lot of friends next summer and fall. Fault free in terms of structure & build, just add feed and time. Her mother is a box car with four legs, with an excellent udder. If our kids were older, I'd like to show this one ourselves.

BW	WW	BW	WW	YW	MILK	ME	HPG	CEM	STAY	Marb	REA
79	541	-2.4	48	78	26	1	12	6	14	0.5	0.04

17



Maternal Brother to Lot 17

WEBER RUBY RED 884

BD: 3/11/18

OFFERED BY WEBER LAND & CATTLE

RAAA: 3962103

Sire HCG BRANDING IRON
RED SIX MILE BRANDO 666C
 RED SSS BARMAID 301Z

Dam HXC CONQUEST 4405P
WEBER RUBY RED 325
 WEBER RUBY RED 853

This Brando daughter sums up what we have been trying to accomplish for the last 20 years. She is built from the ground up, with a stupid amount of rib shape and depth, and has a neck that comes ridiculously high out of the top of her shoulder. 325's bull calf last year was the lead off bull in our Denver pen and sold to 3 Aces Cattle, TN. We also have a sister in production that will have a lead off bull in the spring bull sale. 884 has all the bells and whistles and would be the ultimate Red Angus starter kit.

BW	WW	BW	WW	YW	MILK	ME	HPG	CEM	STAY	Marb	REA
81	540	-0.9	57	97	27	0	10	6	17	0.36	-0.04

18



Full Sister to Lot 18

WDZ JEWEL 8104

BD: 3/15/18

RAAA: 3971452

OFFERED BY ZEHNDER CATTLE

Sire C-BAR ANTICIPATION 101W
C-BAR-RJ RECKONING 105B
 DAMAR MIMI W085

Dam NBAR HAMLEY S913
WDZCF JEWEL 2010
 GT CITA 4060

WDZ CF Jewel 8104 is a full sister to the 2018 NAJRAE Champion Owned Female. 8104 has the same added center dimension and elegant front 1/3 as her sister, but is perhaps a stouter featured version. We are every bit as excited about this one as we were about her sister a year ago. There is not much guess work on this one! **Retaining ½ embryo interest**

BW	WW	BW	WW	YW	MILK	ME	HPG	CEM	STAY	Marb	REA
83	641	-1.4	47	73	27	2	13	7	15	0.36	-0.06

19



Lola - Dam of Lot 19

TC LOLA 46F

BD: 3/16/18

RAAA: 3973992

OFFERED BY TC REDS

Sire BHR DURANGO 60
BHR DURANGO 1158
MISS BHR GRAND VAQUERO 8150

Dam WEBRTC CARD SHARK 1015
TC LOLA 10B
TC LOLA 24Y

This ET Durango heifer is out of the Champion female at the 2016 NWSS Jr. show and Reserve Supreme female at the 2015 World Beef Expo. This heifer is going to follow into her mother footsteps and could have a bigger and more successful career. We are a big fan of this of heifer. She sound, awesome ribbed, attractive and good looking at the stand and has that extra punch from behind. Be sure to get on board here!

BW	WW	BW	WW	YW	MILK	ME	HPG	CEM	STAY	Marb	REA
75	528	0.6	63	107	28	6	10	7	16	0.39	-0.04

20



WDZ DOLLY 8105

BD: 3/17/18

RAAA: 3971454

OFFERED BY ZEHNDER CATTLE

Sire C-BAR ANTICIPATION 101W
C-BAR-RJ RECKONING 105B
DAMAR MIMI W085

Dam MF NEW LOGIC 7383
WDZ DOLLY 5034
PZC DOLLY 7031

You won't find too many females with more depth and rib shape than this C Bar RJ Reckoning daughter. Extremely good in her structure at all four corners and true and square out of her hip. Maternally she traces back to WDZ Dolly 7031 and WEBR MS Dolly 1L, two matrons that have had an impact on this sale from its inception.

BW	WW	BW	WW	YW	MILK	ME	HPG	CEM	STAY	Marb	REA
80	644	-0.8	55	88	28	6	15	6	17	0.46	-0.09

21



TC KASHMIR 47F

BD: 3/17/18

RAAA: 3920301

OFFERED BY TC REDS

Sire BHR DURANGO 60
BHR DURANGO 1158
MISS BHR GRAND VAQUERO 8150

Dam WEBRTC CARD SHARK 1015
TC KASHMIR 110A
TC KASHMIR 116X

Where do I begin here? This heifer speaks for herself. We have sold a fair share of Durango heifers in the past that have gone on to have a track record but this is by some margin the BEST Durango heifer we have ever offered. I can go on all day how good this one is but no need to do that she does all that on her own. ***Retaining the right to one flush at the seller's expense and the buyer's convenience.***

BW	WW	BW	WW	YW	MILK	ME	HPG	CEM	STAY	Marb	REA
88		0	61	103	27	4	9	8	17	0.39	-0.09

22



TC LUCKY LADY 55F

BD: 3/21/18

RAAA: 3920303

OFFERED BY TC REDS

Sire PIE BILLINGS 487
NBAR HAMLEY 5913
NBAR KELLY 913

Dam WEBRTC CARD SHARK 1015
WDZ LADY SHARK 211
MEADO-WEST TC TUCKERS GIRL

I was away at a jackpot show last spring the day this one was born, and Dad called and said we had a great one today. This Hamley daughter is out of one of our favorite cows on the place! This combination we know has worked in the past and still continues to work. This heifer may be the biggest footed and biggest legged female we have ever sold. She is so stout and built awesome! She's already been to the backdrop; she was your Reserve Champion female in the Jr. show at 2018 World Beef Expo. Big time quality here! ***Retaining the right to one flush at the seller's expense and the buyer's convenience.***

BW	WW	BW	WW	YW	MILK	ME	HPG	CEM	STAY	Marb	REA
85		-1.4	49	70	26	-2	11	8	17	0.29	-0.17

23



TC MISSIE 57F

BD: 3/22/18

RAAA: 3920305

OFFERED BY TC REDS

Sire BHR DURANGO 60
BHR DURANGO 1158
MISS BHR GRAND VAQUERO 8150

Dam RED FINE LINE MULBERRY 26P
TC BATTERSON MISSIE 101W
WAF MISSIE 535

This heifer has the look and balance that we all wish all of our cattle could have. She is so elegant up front yet big bodied and soft middled and ties in enough mass with her added attractiveness. This heifer full sister was reserve in her division at NAILE in 2017 and this heifer has the pieces and quality to have a bright future like her full sister and even more later on in the summer.

BW	WW	BW	WW	YW	MILK	ME	HPG	CEM	STAY	Marb	REA
83		-0.7	60	101	26	2	12	8	15	0.48	0.08

24



TC SOPHIA 68F

BD: 4/2/18

RAAA: 3971400

OFFERED BY TC REDS

Sire RED LONE STONE PURSUIT 81W
DBCS DIAMOND SUIT 129C
SIX MILE DIAMOND 14W

Dam TC JACKHAMMER 78Y
MEADO-WEST BABE 408
SLGN ZEPHINIA 2219

This heifer has been a favorite of ours all summer. We had 9 sets of twins this last year and we got lucky that 6 of those sets were twin heifers and here one of those stories. This heifer is out of a DR. Feelgood son that has done a great job for us. This April female is built for the long haul awesome bodied, perfect on her feet and legs yet has the look we all want. As an added bonus, here attitude is awesome for a first time showman and she is awesome, awesome haired!

BW	WW	BW	WW	YW	MILK	ME	HPG	CEM	STAY	Marb	REA
75	437	3.3	65	97	18	-3	7	1	15	0.28	0.1

25



Full Sib to Lot 25

TC LUANNA 75F

BD: 4/5/18

OFFERED BY TC REDS

RAAA: 3971404

Sire BHR DURANGO 60
BHR DURANGO 1158
 MISS BHR GRAND VAQUERO 8150

Dam MEADO-WEST JAZZ
MEADO-WEST LUANNA
 MEADO-WEST BLANCHE

BW	WW	BW	WW	YW	MILK	ME	HPG	CEM	STAY	Marb	REA
68	592	1.5	61	101	21	4	9	6	16	0.35	0

This ET heifer is still super green, but I think she could be the best one when its all said and done! I don't think we have ever sold a heifer this good up front. Her neck is a mile long, comes out so good at the top of her shoulder and so flat and smooth in her shoulder but still transitions so good into her body and rib shape and mass. And has an awesome running gear to go with it! One of the Last 101L females to sell again! Be sure to get in here! ***Retaining the right to one flush at the seller's expense and the buyer's convenience.***

26



Girl Power -Dam of Lot 26

WDZ GIRL POWER 1891

BD: 4/10/18

OFFERED BY ZEHNDER CATTLE

RAAA: 3971426

Sire MLK CRK CUB 722
WEBR DOC HOLLIDAY 2N
 WEBR MS DOLLY 1L

Dam RED SOO LINE POWER EYE 161X
WDZ GIRL POWER 5028
 PZC LADY ROB 7007

Genetically and phenotypically this one puts so much good into one package. Sired by the legendary Doc Holliday and out of WDZ Girl Power, a previous LIR highlight purchased by JK Red Angus in NC. Added style and flair describes this young female; symmetrical and balanced in her design, she will certainly be a contender next summer. ***Retaining one flush at buyers convenience***

BW	WW	BW	WW	YW	MILK	ME	HPG	CEM	STAY	Marb	REA
59	582	-2.2	56	94	25	4	11	7	17	0.4	-0.39

27



TC LUANNA 98F

BD: 4/16/18

RAAA: 3959795

OFFERED BY TC REDS

Sire WEBR DOC HOLLIDAY 2N
WEBR TC CARD SHARK 1015
PFFR MS NYACK 237

Dam MEADO-WEST JAZZ
MEADO-WEST LUANNA
MEADO-WEST BLANCHE

Well I'm going to keep it simple here, This is the best heifer we have ever offered out of 101L Period!
I could go on all day on what I think about this one but I don't need to she is just flat good!
Retaining 1/2 embryo interest

BW	WW	BW	WW	YW	MILK	ME	HPG	CEM	STAY	Marb	REA
80	566	0.2	53	87	23	4	10	7	16	0.19	-0.05

28



WDZ FELICITY 8121

BD: 4/25/18

RAAA: 3971456

OFFERED BY ZEHNDER CATTLE

Sire C-BAR ANTICIPATION 101W
C-BAR-RJ RECKONING 105B
DAMAR MIMI W085

Dam RIV/NSFR TRUMP TOWER Y74
WDZ ALMS B91
35CC VEEP W61

An April prospect with a bright future in store. She combines the body shape, soft structure and neck design to compete at any level. Madison Hirschman purchased a maternal sister last year in the LIR Event that went on to be Reserve Champion Red Angus at the 2018 Nebraska State Fair. This ones pretty cool!

BW	WW	BW	WW	YW	MILK	ME	HPG	CEM	STAY	Marb	REA
68	608	-3	40	63	26	1	13	9	17	0.44	-0.1

29



TC LUANNA 122F

BD: 5/11/18

RAAA: 3959797

OFFERED BY TC REDS

Sire WEBR DOC HOLLIDAY 2N
WEBR TC CARD SHARK 1015
PFFR MS NYACK 237

Dam MEADO-WEST JAZZ
MEADO-WEST LUANNA
MEADO-WEST BLANCHE

These two may ET full sisters are flat going to get it done in the show ring and in that pasture. Again here are two more out of the Proven Donor 101L and these heifers we have gone back and forth which is better of the mays and it changes every day. Both of these heifers just have always had an abundance of quality! They both have the looks that kill and they both can get out and just flat move. Get in on both of these. There flat good! **Retaining 1/2 embryo interest**

BW	WW	BW	WW	YW	MILK	ME	HPG	CEM	STAY	Marb	REA
75	439	0.2	53	87	23	4	10	7	16	0.19	-0.05

30



TC LUANNA 127F

BD: 5/16/18

RAAA: 3959799

OFFERED BY TC REDS

Sire WEBR DOC HOLLIDAY 2N
WEBR TC CARD SHARK 1015
PFFR MS NYACK 237

Dam MEADO-WEST JAZZ
MEADO-WEST LUANNA
MEADO-WEST BLANCHE

These two may ET full sisters are flat going to get it done in the show ring and in that pasture. Again here are two more out of the Proven Donor 101L and these heifers we have gone back and forth which is better of the mays and it changes every day. Both of these heifers just have always had an abundance of quality! They both have the looks that kill and they both can get out and just flat move. Get in on both of these. There flat good! **Retaining 1/2 embryo interest**

BW	WW	BW	WW	YW	MILK	ME	HPG	CEM	STAY	Marb	REA
75	482	0.2	53	87	23	4	10	7	16	0.19	-0.05

The Bred Females

31

WDZ MS CINCH 733

BD: 2/14/17 ZEHNDER CATTLE RAAA: 3761977

Sire LSF SAGA 1040Y

PIE CINCH 4126

TKP BONNE BEL 110

Dam WDZ KING ROB 8022 ET

WDZ BELLA 030

TC WDZ BELLA 8013

BW	WW	BW	WW	YW	MILK	ME	HPG	CEM	STAY	Marb	REA
76	657	-1.1	59	94	26	-1	12	8	16	0.23	-0.17

A PIE Cinch daughter that will make an excellent addition to any program. Her mating to Fusion could be exciting. *Bred 3/27/18 to Andras Fusion PE 5/15/18 - 7/8/18 to C Bar RJ Reckoning*



HAMLEY - Service Sire to Lot 33

32

TC SWEETNESS 18E

BD: 2/18/17 RAAA: 3989278

Sire BUF CRK THE RIGHT KIND U199

LOOSLI RIGHT ON 423

SRR DORY-JIBA 0155-5036

Dam SLGN YARDMASTER 125Y

TC 46C

PERKS SWEET VISION 961W

BW	WW	BW	WW	YW	MILK	ME	HPG	CEM	STAY	Marb	REA
83	653	-2.3	62	103	23	-4	10	8	14	0.25	0.04

This young female is super sound made and deep middled. She is out of the great EPD bull Loosli Right On that is producing great numbered cattle that still have that show ring look. *Service Sire MLK Big Foot 2017 National Reserve Champion Bull*

33

WDZ ELLA 760

BD: 3/14/17 ZEHNDER CATTLE RAAA: 3971554

Sire C-BAR ANTICIPATION 101W

C-BAR-RJ RECKONING 105B

DAMAR MIMI W085

Dam MF NEW LOGIC 7383

WDZ DOLLY 5034

PZC DOLLY 7031

BW	WW	BW	WW	YW	MILK	ME	HPG	CEM	STAY	Marb	REA
63	632	-1.5	53	85	28	6	15	7	17	0.46	-0.09

We have been extremely pleased with our C Bar RJ Reckoning daughters in production. The Dolly cow family on the maternal side of this pedigree is an added bonus. *Bred 4/27/18 to NBar Hamley PE 5/15/18 - 7/8/18 to WDZ Power Eye 6028*

The Bred Females



HEARTLESS - Sire of Lot 34

35

Wdz ELANNA 773

BD: 3/29/17

ZEHNDER CATTLE

RAAA: 3762021

Sire C-BAR ANTICIPATION 101W

Dam WEBRTC CARD SHARK 1015

C-BAR-RJ RECKONING 105B

Wdz PHOEBE 5035

DAMAR MIMI W085

TC PHOEBE 14S

BW	WW	BW	WW	YW	MILK	ME	HPG	CEM	STAY	Marb	REA
68	569	-2.3	45	74	27	5	13	10	15	0.37	-0.02

A moderate made, big middled Reckoning daughter. The Phoebe 14S cow family on the bottom side of this pedigree has produced numerous high sellers and champions for TC Reds and 3 Aces programs. *Bred 4/26/18 to NBar Hamley PE 5/15/18 to 7/8/18 to Wdz Power Eye 6028*

34

Wdz MS HEARTLESS 768

BD: 3/21/17

ZEHNDER CATTLE

RAAA: 3761969

Sire NBAR HAMLEY S913

Dam KTH COMBO BOY S56

MEADO-WEST HEARTLESS 416

ALMS 9739

MEADO-WEST PRECIOUS 010X

BETTER FORTUNA

BW	WW	BW	WW	YW	MILK	ME	HPG	CEM	STAY	Marb	REA
86	541	0.7	49	74	23	1	12	5	16	0.28	-0.11

An attractive made Heartless daughter safe in calf to Conquest. *Bred 4/27/18 to HXC Conquest PE 5/15/18 - 7/8/18 to C Bar RJ Reckoning*

36

TC MISSIE 71C

BD: 4/6/15

TC REDS

RAAA: 3560245

Sire RED TOWAW INDEED 104H

Dam RED FINE LINE MULBERRY 26P

J6RA BKE INDEED

TC BATTERSON MISSIE 101W

RED SIX MILE FAVORITE 890S

WAF MISSIE 53S

BW	WW	BW	WW	YW	MILK	ME	HPG	CEM	STAY	Marb	REA
70	686	-1.8	56	84	23	-9	13	8	15	0.4	-0.09

A true outcross dark red female. She is a massive made female that has that extra rib and muscle to be a great brood cow. Stems back to the Famous Missie cow family from Weaver Angus in Illinois. *Service Sire MLK Big Foot 2017 National Reserve Champion Bull*

The Bred Females



BIG FOOT - Service Sire to Lots 36 - 38



Daughter of Lot 38

37

TC MS ROCKON 73C

BD: 4/7/15

TC REDS

RAAA: 3560249

Sire BHR DURANGO 60

BHR DURANGO 1158

MISS BHR GRAND VAQUERO 8150

Dam SLGN REGULATOR 503R

MEADO-WEST 209Z

DAMAR ROCK ON X051

BW	WW	BW	WW	YW	MILK	ME	HPG	CEM	STAY	Marb	REA
75	679	0.4	64	108	25	5	8	7	16	0.34	-0.01

A striking female by Durango and out of a Regulator cow. Good footed and balanced from end to end. It should be exciting to see how her mating with MLK Big Foot turns out. Awesome combination. *Service Sire MLK Big Foot 2017 National Reserve Champion Bull*

38

TC LUANNA 99B

BD: 4/15/14

TC REDS

RAAA: 1748418

Sire BHR DURANGO 60

BHR DURANGO 1158

MISS BHR GRAND VAQUERO 8150

Dam 3 ACES SIDEWAYS

TC LUANNA 33Y

TC LUANNA 76U

BW	WW	BW	WW	YW	MILK	ME	HPG	CEM	STAY	Marb	REA
75	564	0.9	58	95	21	3	10	6	15	0.39	-0.09

Great young female here. This cow is the dam of one of the heifers in our 2018 NWSS Champion pen. She stems back to our foundation Luanna cow family that consistently produces great ones. *Service Sire MLK Big Foot 2017 National Reserve Champion Bull*

39



Son of Lot 39



Daughter of Lot 39

BJF KITTY 9059W

BD: 5/4/09

RAAA: 1360100

OFFERED BY WEBER LAND & CATTLE

Sire BUF CRK CHF 824-1658
BFCK CHEROKEE CNYN 4912
MRM 1431 8611 9109

Dam CBR SHOTGUN
CBR MISS KITTY 316-122
MIS RULE RR-1467

This cow has been a big part of this operation. She's worked on anything we have bred her to. She has raised both \$16,000 & \$10,000 Power Eye heifers. The Jones family, NE, purchased a \$19,000 heifer, while an \$11,000 Tomahawk bull went to Colby Buchert, MN. In the meantime, we have retained 3 daughters and she has a front end Tomahawk bull for the spring sale. We flushed her once, where she gave us 16 #1 eggs. She is built like a tank and moves like a cat. Don't pass this one up! *PE 6/1/18 - 7/15/18 to Brando and PE 7/15/18 - 8/15/18 to Takeover 5051C*

BW	WW	BW	WW	YW	MILK	ME	HPG	CEM	STAY	Marb	REA
75	628	-1.8	61	91	21	-1	10	6	16	0.35	0.24

40



Daughter of Lot 40 Flush Dam

MEADO-WEST TC HANNAH FLUSH

BD: 4/5/10

OFFERED BY TC REDS

RAAA: 1369375

Sire PIE DEEP CANYON 908
PIE DEEP CREEK 120
 PIE FAYETTE JR 961

Dam FCC RAMBO 502
DKK MS MONTANA POWER
 CK'S MISS ANNE 4011

Offering a Flush on one of our feature donors here at TC Reds. This cow was bred by the Late Bruce Westhuis. Bruce was one of the greatest Red Angus breeders of all times. We are happy to of called him our close friend and mentor. Meado West TC Hannah is a powerfully made, flawlessly designed female. She is passing that look, style and power onto her offspring. This female has only just begun to make her mark on our herd, this is your chance to let her make her mark on yours!

Guarantee of six embryos.

BW	WW	BW	WW	YW	MILK	ME	HPG	CEM	STAY	Marb	REA
85	709	-1.0	51	86	29	4	10	6	12	0.27	0.13

41



Daughter of Lot 42 Donor Dam

Montana Creek x Ellie
2 IVF HEIFER SEXED EMBRYOS
 OFFERED BY TC REDS

SIRE REG: 980335

DAM REG: 1371252

Sire PIE DEEP CREEK 120
MEADO-WEST MONTANA CREEK 413
 DKK MS MONTANA POWER

Dam NBAR HAMLEY S913
WEBR MS ELLIE 1024
 WEBR MS. ELLIE 145

This unique offering blends one of the legendary Ellie 1024 cow with one of the greatest bulls in the breed; Meado West Montana Creek. Both Sire and Dam have a long list of great progeny that have won on a national level. There is no semen left to create this mating again. Truly once in a lifetime opportunity! *One guaranteed pregnancy when implanted by certified technician.*

BW	WW	YW	MILK	ME	HPG	CEM	STAY	Marb	REA
-0.3	50	78	19	0	11	6	15	0.31	-0.01

The Genetic Lots

42



Maternal Sib to Lot 42 Embryos



Full Sib to Lot 42 Embryos

Card Shark x Lola
3 IVF HEIFER SEXED EMBRYOS
 OFFERED BY TC REDS

SIRE REG: 1371275

DAM REG: 1506442

Sire WEBR DOC HOLLIDAY 2N
WEBR TC CARD SHARK 1015
 PFFR MS NYACK 237

Dam NBAR HAMLEY S913
TC LOLA 86W
 TC LOLA 52R

BW	WW	YW	MILK	ME	HPG	CEM	STAY	Marb	REA
-0.4	56	90	27	3	11	8	17	0.25	-0.07

Here is your chance to get in on an exceptional genetic opportunity. Offspring's of this featured mating have gone on to do great things. A full sib was a Ladies in Red past high seller and went on to be Reserve Red Angus at Oklahoma youth Expo in 2015. Another maternal sib was our lead off bull in our 2018 Reserve National Champion pen of Bulls at the 2018 NWSS and sold to DWAJ Cattle in Canada. The cow is powerful on her own, but adding Card Shark to the mating just makes it extra special. *One guaranteed pregnancy when implanted by certified technician.*

43



Maternal Sib to Lot 43 Embryos



Full Sib to Lot 43 Embryos

Card Shark x Jewel

3 EMBRYOS

OFFERED BY ZEHNDER CATTLE

SIRE REG: 1371275

DAM REG: 1521853

Sire WEBR DOC HOLLIDAY 2N
WEBR TC CARD SHARK 1015
 PFFR MS NYACK 237

Dam NBAR HAMLEY S913
WDZCF JEWEL 2010
 GT CITA 4060

A donor and mating with proven success, having produced an NAJRAE Bred and Owned Champion Female and Bull, as well as the reserve champion bull at the NAILE. Beyond the current mating, WDZ Jewel 2010 has produced many more success stories including the 2018 NAJRAE Champion Owned Female. Bid with confidence on this proven opportunity.

One guaranteed pregnancy when implanted by certified technician.

BW	WW	YW	MILK	ME	HPG	CEM	STAY	Marb	REA
-1.3	51	83	29	2	9	8	18	0.18	-0.04

The Genetic Lots

44



Firestorm - Sire of Lot 44 Embryos



Girl Power - Dam of Lot 44 Embryos

Firestorm x Girl Power

3 EMBRYOS

OFFERED BY ZEHNDER CATTLE

SIRE REG: 1472101

DAM REG: 1751085

Sire RED SIX MILE SAKIC 8325
PZC TMAS FIRESTORM 1800 ET
 GT CITA 4060

Dam RED SOO LINE POWER EYE 161X
WDZ GIRL POWER 5028
 PZC LADY ROB 7007

BW	WW	YW	MILK	ME	HPG	CEM	STAY	Marb	REA
-1.1	53	88	27	1	9	7	14	0.31	-0.31

WDZ Power Girl ended a successful show career as a heifer by being named Supreme Champion Female at the 2016 MN Beef Expo. However, she likely had more fans when Sydney decided to bring her back out as a pair the following summer. Superb in her structure, overwhelming in her power and yet elegant in her design. The mating to the deceased Firestorm could create your next herdsire, sale topper or show stopper! *One guaranteed pregnancy when implanted by certified technician.*

The Genetic Lots

45



King of the Cowboys - Sire of Lot 45 Embryos



New Moon - Dam of Lot 45 Embryos

King of the Cowboys x New Moon

3 EMBRYOS

OFFERED BY WEBER LAND & CATTLE

SIRE REG: 3822051

DAM REG: 1471518

Sire PIE THE COWBOY KIND 343
4MC KING OF THE COWBOYS 706
 4MC HVYWT 5163

Dam BERG NEW DESIGN 724
BRRA NEW MOON Y715
 PFFR MS MOONBEAM

BW	WW	YW	MILK	ME	HPG	CEM	STAY	Marb	REA
0.7	60	101	23	0	11	6	19	0.34	-0.06

715 is a cow that you have a hard time finding a fault in. Long & extended, deep, great uttered with a set of wheels built to last. Her daughter by Up North won the NAILE in 2015, and this year, arguably our best bred heifer is another daughter. Seeing Reforms first calf crop, this mating to Reform could knock it out of the park! On the other hand, Jered Shipman called me this spring and said, "You need to try King of the Cowboys". He sent me some cell phone pictures and a video and they'll make you sit up and pay attention. We put some of both matings in this spring and I haven't been this jacked up since Michelle said Yes! *One guaranteed pregnancy when implanted by certified technician.*

The Genetic Lots

46



Reform - Sire of Lot 46 Embryos



New Moon - Dam of Lot 46 Embryos

Reform x New Moon 3 EMBRYOS

SIRE REG: 3535729

DAM REG: 1471518

OFFERED BY WEBER LAND & CATTLE

Sire BIEBER ROLLIN DEEP Y118
WEBER REFORM 618
BJF LANA'S EQUAL 8021U

Dam BERG NEW DESIGN 724
BRRA NEW MOON Y715
PFFR MS MOONBEAM

BW	WW	YW	MILK	ME	HPG	CEM	STAY	Marb	REA
0.3	60	97	24	5	8	6	19	0.36	0.04

715 is a cow that you have a hard time finding a fault in. Long & extended, deep, great uttered with a set of wheels built to last. Her daughter by Up North won the NAILE in 2015, and this year, arguably our best bred heifer is another daughter. Seeing Reforms first calf crop, this mating to Reform could knock it out of the park! On the other hand, Jered Shipman called me this spring and said, "You need to try King of the Cowboys". He sent me some cell phone pictures and a video and they'll make you sit up and pay attention. We put some of both matings in this spring and I haven't been this jacked up since Michelle said Yes! *One guaranteed pregnancy when implanted by certified technician.*

Eighth Annual Art for a Cause



The String

As our eighth annual sale has come around again, so has your opportunity to purchase art by Michelle Weber. This year's donation piece is a classic that captures a glimpse into the show barn and the work put into these lovely females. This timeless piece has been framed and will be auctioned off at the beginning of the sale with proceeds going to the North American Jr. Red Angus Event.



MICHELLE WEBER
STUDIO

View Michelle's work and get more information at
WWW.MICHELLEWEBERSTUDIO.COM

RED CONNECTION

RED ANGUS BULL SALE - MARCH 13, 2019

Madison, South Dakota



2018 RESERVE CHAMPION PEN OF RED ANGUS BULLS
NATIONAL WESTERN STOCK SHOW - TC REDS



2017 CHAMPION PEN OF RED ANGUS BULLS
NATIONAL WESTERN STOCK SHOW - WEBER LAND & CATTLE

WEBER LAND & CATTLE

TC REDS

2017 Champion Pen of Five Charolais Bulls

zoetis

2017

NATIONAL WESTERN
STOCK SHOW

zoetis



ZEHNDER WAAGE PARTNERSHIP

2019 BULL SALE



March 30, 2019 - 5 pm - Greenbush, MN

A SELECT GROUP OF CHAROLAIS AND RED ANGUS BULLS



The Eighth Annual Event

TCREDS.COM
WEBERLANDANDCATTLE.COM

WEBER LAND & CATTLE
2039 COUNTY HIGHWAY 13
LAKE BENTON MN 56149

Presorted
First Class
US Postage
PAID
SlateGroup